



PART NUMBER 2S200, 2" STAINLESS STEEL TWO-PIECE SPLIT CLAMP-TYPE SHAFT COLLARS HIGH STRENGTH

- Can be placed anywhere on shaft**
- Smooth bore protects shafts from damage**
- Superior holding power over set-screw type collars**
- Offered in High Strength, Low Profile and Heavy Duty styles**
- Stocked in a variety of materials**

LIST PRICE

\$63.83

2-Piece Clamp-Type Shaft Collars are for use on standard round shafts, hard or soft, as well as on thin wall tube or over a split hub. They can be completely disassembled and placed anywhere on a shaft. Precision machined, non-marring, easy to adjust, with high clamping power, they are stocked in the following materials:

Steel

Stainless Steel

Aluminum

Nylon

Delrin

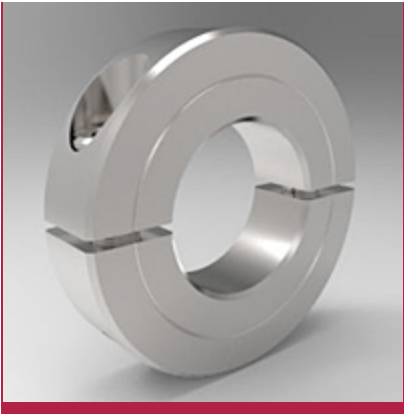
Offered in three styles:

High Strength: Clamp screw does not protrude beyond the outside diameter (OD)

Low Profile: Clamp screw protrudes beyond the OD

Heavy Duty: Uses larger clamp screw and has larger OD for 2X holding power

Standard Series offers economy-priced versions of low-profile styles (32LXXX and 32SXXX parts).



[Specifications](#) | [Dimensional Attributes](#)

SPECIFICATIONS	
Part Number	2S200
Series	Signature
Material	Stainless Steel
Alloy	303
Finish	None
Type	High Strength
Approximate Weight	0.81 lb
Country of Origin	USA
UPC Code	662786005442
RoHS2 Compliant	Yes
REACH Compliant	Yes
Manufacturer Stock	18.00

Message

In stock orders placed before 1PM will ship the same day.
Backorders will ship within 3 weeks

Inventory_Note

0

DIMENSIONAL ATTRIBUTES**Bore Size**

2 in

Outside Diameter

3.250 in

Width

0.625 in

Recessed Screw

Yes

Screw Size

5/16-24 x 1

Screw Material

18-8 Stainless Steel



Stafford Manufacturing Corp.

256 Andover St.

Wilmington, MA 01887

Phone: 978.657.8000

Fax: 978.657.4731

For More Information:

800.695.5551

sales@staffordmfg.com