



PART NUMBER FC1L010, 5/8" STEEL FACE MOUNTING SHAFT COLLARS ONE-PIECE SPLIT CLAMP-TYPE

Universal tapped face holes for multiple mounting options

Smooth bore protects shafts from damage

Superior holding power over set-screw type collars

Face Mounting Shaft Collars have universal tapped mounting holes, allowing multiple options for mounting components to the collar.

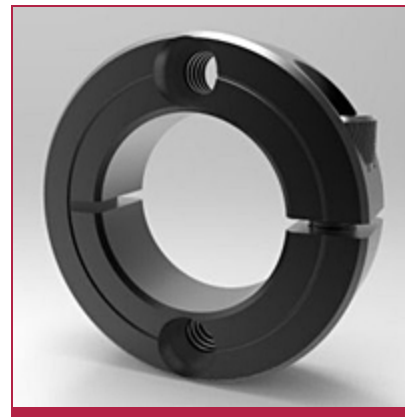
1-Piece Clamp-Type Shaft Collars are for use on standard round shafts, hard or soft, as well as on thin wall tube or over a split hub. They are precision machined, non-marring, easy to adjust, with high clamping power.

Stocked in:

Steel

LIST PRICE

\$18.06



[Specifications](#) | [Dimensional Attributes](#)

SPECIFICATIONS

Part Number	FC1L010
Series	Solution
Material	Steel

Alloy	1215
Finish	Black Oxide
Type	Low Profile
Approximate Weight	0.1 lb
Country of Origin	USA
UPC Code	662786026676
RoHS2 Compliant	Yes
REACH Compliant	Yes
Manufacturer Stock	54.00
Message	In stock orders placed before 1PM will ship the same day. Backorders will ship within 3 weeks
Inventory_Note	0

DIMENSIONAL ATTRIBUTES

Bore Size	5/8 in
Outside Diameter	1.313 in
Width	0.438 in
Recessed Screw	No

Screw Size 10-32 x 5/8

Screw Material Alloy Steel

Mounting Hole 10-24

Distance Between Holes 0.969 in

Counterbore Cap Screw Size 8-32



Stafford Manufacturing Corp.

256 Andover St.

Wilmington, MA 01887

Phone: 978.657.8000

Fax: 978.657.4731

For More Information:

800.695.5551

sales@staffordmfg.com